

ESTABLISHED 1904

J. L. ORME, President & Gen. Mgr.  
G. ROY ROYD, Vice Pres. & Treasurer  
ARTHUR B. ORME, Vice Pres.  
W. C. MCANTNEY, Sec'y & Sales Mgr.



CAREY ADDRESS  
NEARBY  
A. B. C. CODE

# THE CAMBRIDGE GLASS COMPANY

NO AUTOMATIC MACHINES USED - ONLY HAND MADE QUALITY GLASSWARE - AN AVERAGE OF 700 EMPLOYEES

CAMBRIDGE, OHIO, U.S.A.

July 10, 1953

Dear Customer:

Here is a copy of our #17 Catalog of Laboratory Supply Glassware, showing revised prices as of this date.

Please note that prices are "EACH" with the exception of the prices for #910 and #913 Watch Glasses on page 14, the prices for which are per dozen.

All prices are subject to discount of 50% and are plus regular charge for package with the exception of the prices for Desiccators on page 9 and for Bell Glasses on page 15, the prices for which includes package.

These new prices have been figured according to our present costs and are, of course, subject to change without notice as all orders are accepted subject to prices prevailing at time of shipment.

If you would like to have additional copies of this catalog and pricelist, we will be glad to send them to you upon request.

Thanking you for your past and future favors and cooperation, we are

Yours truly,  
THE CAMBRIDGE GLASS COMPANY



NEW YORK

NEW YORK

LOS ANGELES

SHOWROOMS

CHICAGO

DENVER



# CATALOG

[ No. 17 ]

of

Chemical, Laboratory Supply, Physicians,

Druggists and Watchmakers

Glassware

1953



== The Cambridge Glass Company ==

# CATALOG

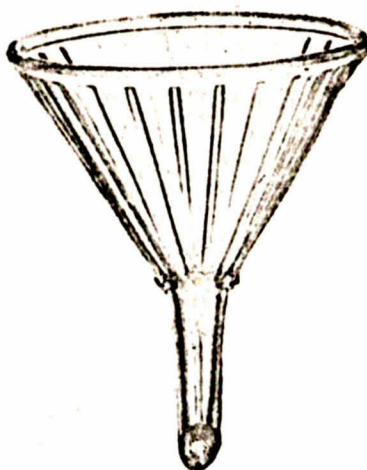
[No. 17]

of

Chemical, Laboratory Supply, Physicians,

Druggists and Watchmakers

Glassware



1953

*Manufactured by*

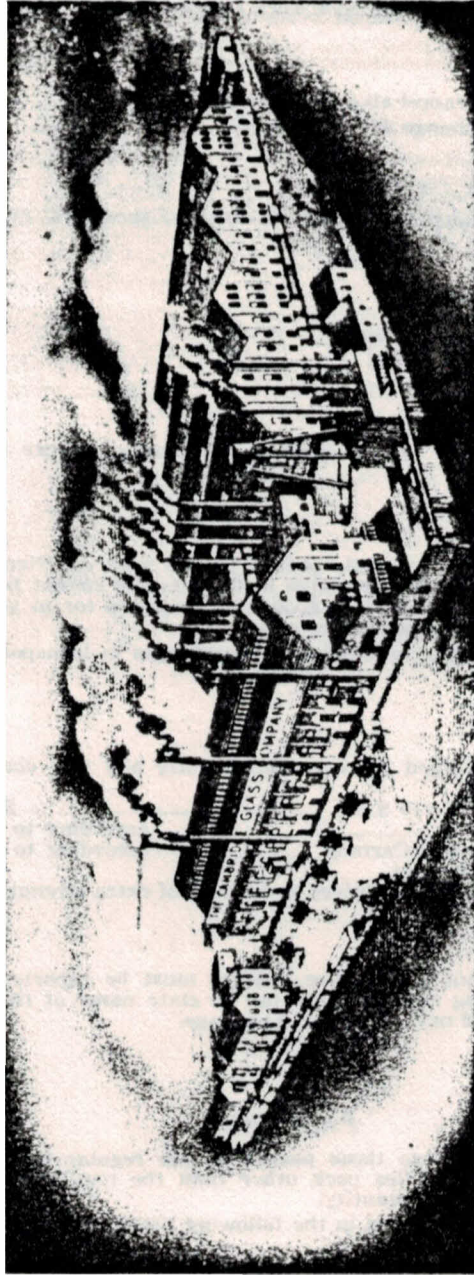
*The Cambridge Glass Company*

Cambridge, Ohio

---

THE CAMBRIDGE GLASS COMPANY, CAMBRIDGE, OHIO

THE HOME OF CAMBRIDGE GLASS



The Cambridge Glass Co.  
CAMBRIDGE, OHIO

THE CAMBRIDGE GLASS COMPANY, CAMBRIDGE, OHIO

**TERMS:**

Our Terms are 1% cash discount 15 days from date of invoice.  
All shipments priced and made F. O. B. Cambridge.  
Unless satisfactory rating or references given, cash should accompany order.  
Remittance should be made payable to The Cambridge Glass Company at  
company's offices, Cambridge, Ohio in New York Exchange.

**QUOTATIONS:**

Prices in this catalog cancel all former prices.  
All prices subject to change without notice.

**DELIVERY:**

All sales and contracts are subject to strikes, accidents, fires or other un-avoidable delays.

**CABLE ADDRESS:**

"NEARCUT", Cambridge, Ohio  
A. B. C. Code 5th Edition used

**SHIPPING:**

Shipment will be made by the cheapest and quickest route unless otherwise specified.

**PACKING:**

All shipments are most carefully packed by the most experienced packers and every care taken against possible breakage in transit. We cannot be responsible for damage to shipments enroute, as after goods are receipted for in good condition by transportation company, our responsibility ceases.

Claims for lost packages, breakages or overcharges in transportation should be made to carriers.

**PACKAGES:**

All packages are charged for according to size and this charge is added to bottom of invoice as follows:

Standard Barrel (19 x 30) .....	\$2.50
Tierces .....	according to size
Boxes, Crates and Cartons .....	according to size

All Package charges are net.

Export packages take higher prices on account of extra strength.

**SHORTAGES:**

Discrepances in count or in ware ordered must be reported promptly upon receipt of goods. In making report do not fail to state name of the packer and return the packing slip placed in the top of the package.

---

**PACKING:**

The quantities shown are those packed in the regular barrel, except where otherwise noted. Where quantities pack other than the regular barrel, the size or kind of package is noted under quantity.

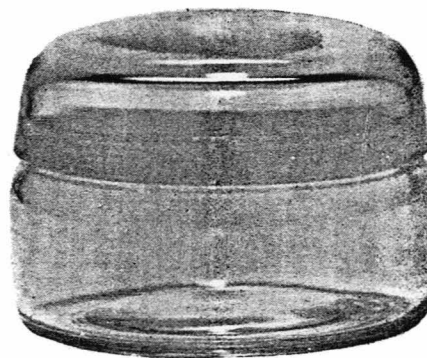
The manner of packing given in the following list is based on the cheapest and safest method of packing.



600



608



609

**600—ALCOHOL LAMP**—Complete with brass burner, wick and ground on glass cap.

	No. 1	2	3
Capacity, ounces .....	2	4	8
Outside diameter, inches .....	3	3½	4½
Outside diameter, MM .....	76	89	105
Height overall inches .....	3¾	4	4½
Height overall, MM .....	90	101	110
Price Each .....	\$ .90	1.00	1.10
Dozen to Barrel .....	17	10	8

**608—ALCOHOL CUP**—With ground on knob cover

Capacity, ounces .....	12
Inside diameter at top .....	92 mm or 3¾ inches
Inside depth .....	54 mm or 2½ inches
Price Each .....	\$1.50
Dozen to Barrel .....	5

**609—ALCOHOL CUP**—With ground on flat cover

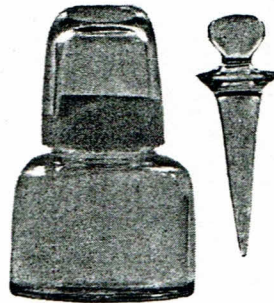
	No. 1	2
Capacity, ounces .....	3	8
Inside diameter at top, inches .....	2¼	3¾
Inside diameter at top, MM .....	57	86
Inside depth, inches .....	1¾	2
Inside depth, MM .....	40	51
Price Each .....	\$1.00	1.50
Dozen to Barrel .....	20	7



613



614



615

**613—BENZINE CUP—Ground on Cover**

Capacity, ounces .....	2
Inside diameter .....	57 mm or 2¼ inches
Inside depth .....	32 mm or 1¼ inches
Price Each .....	\$ .80
Dozen to Barrel .....	25

**614—BENZINE CUP—Ground on Knob Cover**

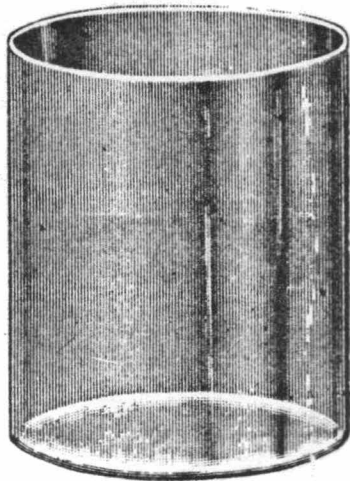
Capacity, ounces .....	4¼
Inside diameter .....	65 mm or 2½ inches
Inside depth .....	54 mm or 2¼ inches
Price Each .....	<i>5.28 doz</i> \$ .90
Dozen to Barrel .....	18

**615—BALSAM BOTTLE—Ground on Cap with dropper**

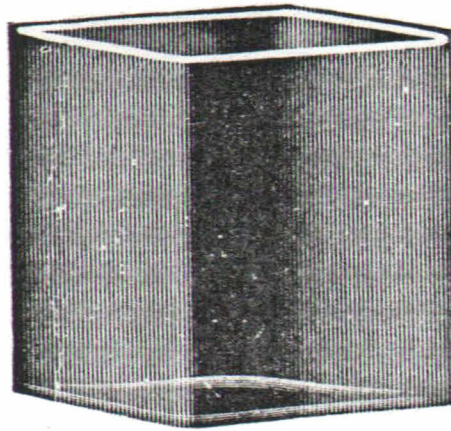
Capacity, ounces .....	1½
Outside diameter .....	53 mm
Height overall .....	90 mm
Price Each .....	\$ .90
Dozen to Barrel .....	24
Price Dropper, Each (as illustrated) .....	\$ .80
Price Rod Dropper, Each .....	\$ .10

THE CAMBRIDGE GLASS COMPANY, CAMBRIDGE, OHIO





618



619

**618—BATTERY JAR—Round, Blown, with seam. Ground top.**

	No. 1	2	3
Capacity ounces .....	39	74	128
Inside diameter, inches .....	4½	5	6
Inside diameter, MM .....	110	127	153
Inside depth, inches .....	5	7	8
Inside depth, MM .....	127	178	204
Price Each .....	\$1.25	1.60	2.20
Dozen to Barrel .....	3½	2	1

**619—BATTERY JAR—Square, Blown, ground top.**

	No. 1	2	3	4
Capacity, ounces .....	29	30	32	57
Outside length, inches .....	4	2½	2½	4
Outside length, MM .....	102	64	64	102
Outside width, inches .....	4	4¼	4¼	4
Outside width, MM .....	102	108	108	102
Outside height, inches .....	4	6	7	8
Outside height, MM .....	102	152	178	204
Price Each .....	\$1.25	1.40	1.50	1.75
Dozen to Barrel .....	6*	6*	4	2¾*

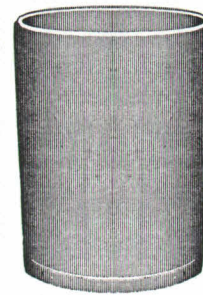
(\*19x34)



648



644 Lipped



644 Not Lipped

**644—BEAKER—Tumbler, Pressed, ground bottom, lipped.**

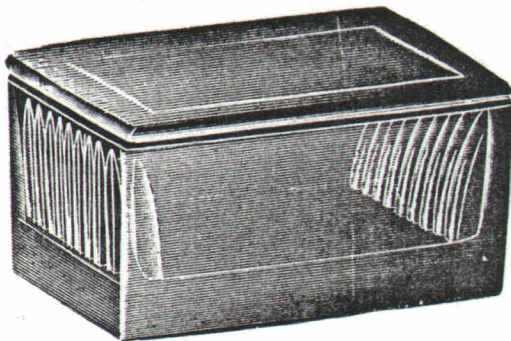
Capacity, ounces .....	8
Diameter, Lipped .....	85 mm including lip
Height, Lipped .....	95 mm
Diameter, Not Lipped .....	75 mm
Height, Not Lipped .....	95 mm
Price Each .....	<i>1.36 only</i> \$ .50
Dozen to Barrel .....	21

Also made not lipped at same price

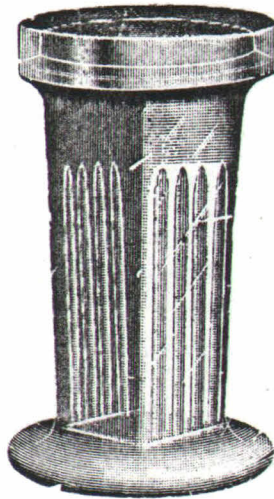
**648—REAGENT BOTTLE CAP—Pressed**

	No. 1 <i>2.40</i>	2 <i>2.64 only</i>	3	4 <i>3.72 only</i>
Size Bottle to fit, ounces .....	4	8	16	32
Inside diameter, inches .....	1¼	1½	1¾	2¼
Inside diameter, MM .....	32	40	46	52
Inside Height, inches .....	1¾	2¼	2¾	3¼
Inside Height, MM .....	48	57	65	70
Price Each .....	\$ .40	.45	.50	.60
Dozen to Barrel .....	60	50	30	45

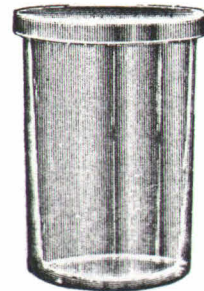
THE CAMBRIDGE GLASS COMPANY, CAMBRIDGE, OHIO



672



673



680

677-78-79

**672—STAINING DISH OR SLIDE BOX & COVER** — for staining specimens on the slide, with loose fitting cover and grooves to keep slides in place. To accommodate ten slides.

Inside at bottom, length .....	75 mm or 2 $\frac{3}{4}$ inches
Inside at bottom width .....	55 mm or 3 $\frac{3}{8}$ inches
Price Each .....	\$ .70
Dozen to Barrel .....	20
Dozen to Carton .....	1

*14.23 doz*

**673—COPLIN STAINING JAR AND COVER**—Standard size. With ground on cover.

Capacity ten slides 3" x 1"	
Price Each .....	\$ .85
Dozen to Barrel .....	18
Dozen to Carton .....	1

*Cover only 1.56 doz*  
*9.13 each*

*50.2 doz*

**677—STENDER DISH OR PREPARATION JAR**—with ground on Cover.

Diameter .....	38 mm or 1 $\frac{1}{2}$ inches
Height .....	20 mm or $\frac{3}{4}$ inches
Price Each .....	\$ .40
Dozen to Barrel .....	120

*2.64 doz*

**678—STENDER DISH OR PREPARATION JAR**—with ground on Cover.

Diameter .....	51 mm or 2 inches
Height .....	26 mm or 1 inch
Price Each .....	\$ .45
Dozen to Barrel .....	45

*3.26*

**679—STENDER DISH OR PREPARATION JAR**—with ground on Cover.

Diameter .....	63 mm or 2 $\frac{1}{2}$ inches
Height .....	29 mm or 1 $\frac{1}{8}$ inches
Price Each .....	\$ .50
Dozen to Barrel .....	35

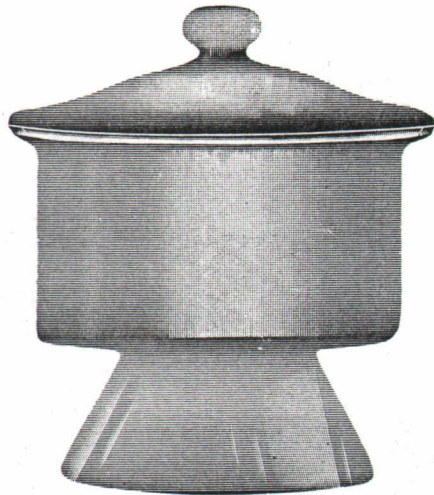
*3.17 doz*

*(518ale)* **680—STENDER DISH OR PREPARATION JAR**—with ground on Cover.

Diameter .....	60 mm O.D. or 2 $\frac{3}{8}$ inches
Height .....	95 mm or 3 $\frac{3}{4}$ inches
Price Each .....	\$ .60
Dozen to Barrel .....	16

*3.70 doz*

THE CAMBRIDGE GLASS COMPANY, CAMBRIDGE, OHIO



682



685

**682—DESICCATING JAR—Scheibler—Ground on knob cover. Hand made, heavy weight.**

	No. 1	2	3	4	5
Inside diameter, inches	4	5	6	8	10
Inside diameter, MM	100	127	150	203	250
Inside Height, inches	4 ¼	5 ¼	6	8	8 ½
Inside Height, MM	108	134	150	203	215
Price Each	\$5.00	6.00	7.20	12.00	16.00

**683—DESICCATING JAR—Fruehling and Schultz—Ground on knob cover. Hand made. Heavy weight.**

	No. 1	2
Inside Diameter, inches	8	10
Inside Diameter, MM	203	250
Inside Height, inches	8	8 ½
Inside Height, MM	203	215
Price Each	\$12.00	16.00

(same as 685, except with solid knob)

**684—DESICCATING JAR—Scheibler—Ground on cover, with hole in cover for stoppering. Hand made, heavy weight.**

	No. 1	2	3
Inside diameter, inches	6	8	10
Inside diameter, MM	150	203	250
Inside Height, inches	6	8	8 ½
Inside Height, MM	150	203	215
Price Each	\$7.20	12.00	16.00

(same as 682 except with hole in cover)

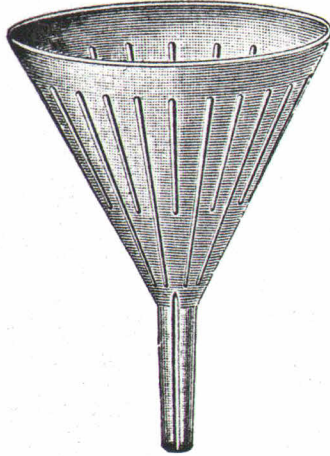
**685—DESICCATING JAR—Fruehling and Schultz—Ground on Cover, with hole in cover for stoppering. Hand made, heavy weight.**

	No. 1	2
Inside diameter, inches	8	10
Inside diameter, MM	203	250
Inside Height, inches	8	8 ½
Inside Height, MM	203	215
Price Each	\$12.00	16.00

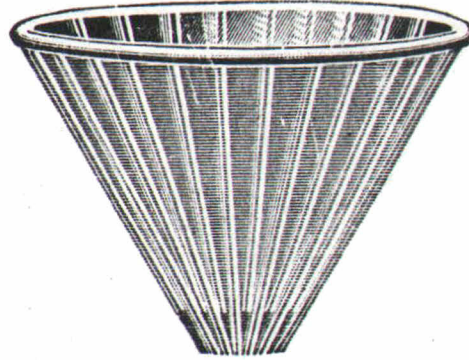
Prices on this page include Package. Packed ONE in a Reshipping Carton.  
F. O. B. Cambridge, Ohio.

Price of Covers is 1/3 of prices for complete article.

THE CAMBRIDGE GLASS COMPANY, CAMBRIDGE, OHIO



695



698

695—FUNNEL—Ribbed, Pressed, Fire Polished, making a stronger, more rugged funnel, less likely to chip.

	No. 1	2	3	4	5	6	7	8	9
Capacity, ounces .....	1	2	4	8	16	32	64	128	256
Outside diameter, in.....	2½	3	4¼	5	5¾	7½	8¾	10½	13
Outside diameter, MM....	63	76	108	127	146	191	220	267	331
Price Each .....	\$ .50	.60	.70	.90	1.25	1.75	2.25	4.00	7.00
Dozen to Barrel .....	25	15	11	6	3	2	1½	5/6	½

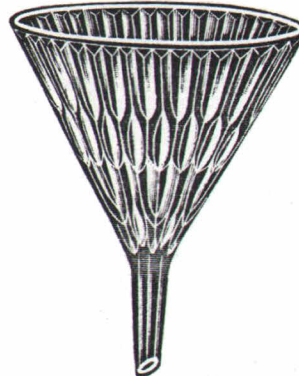
698—SUGAR FUNNEL—Ribbed, no stem, for sugar analysis.

	No. 1	2	3	4
Capacity, ounces .....	2	4	8	16
Outside diameter, inches .....	3	4¼	5	5¾
Outside diameter, MM .....	76	106	127	146
Price Each .....	\$ .80	.70	.90	1.25
Dozen to Barrel .....	50	30	15	9

All funnel stems wrapped with corrugated cardboard to protect from breakage.



725



727

725—FUNNEL—Handy, pressed, fire polished

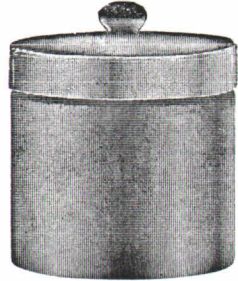
	No. 1	2
Capacity, ounces .....	2	4
Outside diameter, inches .....	2½	3¾
Outside diameter, MM .....	67	79
Price Each .....	\$ .35	.40
Dozen to Barrel .....	60	40

727—FUNNEL—with diagonal fluting for rapid filtering. Fire polished.

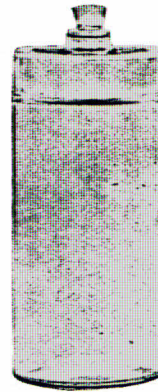
Capacity, ounces .....	64
Outside diameter, inches .....	8¾
Outside diameter, MM .....	223
Price Each .....	\$2.50
Dozen to Barrel .....	1½

All funnel stems wrapped with corrugated cardboard to protect from breakage.

THE CAMBRIDGE GLASS COMPANY, CAMBRIDGE, OHIO



764 1/2



767

**764 1/2—BANDAGE OR SURGICAL DRESSING JAR AND COVER—Handmade.**  
Blown, with seam. Plain round knob.

	No. 1	2	3	4
Capacity, ounces .....	9	20	41	76
Outside diameter, inches .....	3	4	5	6
Outside diameter, MM .....	79	102	127	152
Overall height, inches .....	4 1/4	5 3/8	6 1/2	7 3/4
Overall height, MM .....	108	132	160	197
Price Each .....	\$1.00	1.50	2.50	3.00
Dozen to Barrel .....	15*	6*	3 1/2*	1 3/4

(\*19x34)

**764 1/2—BANDAGE OR SURGICAL DRESSING JAR ONLY—No Cover.**

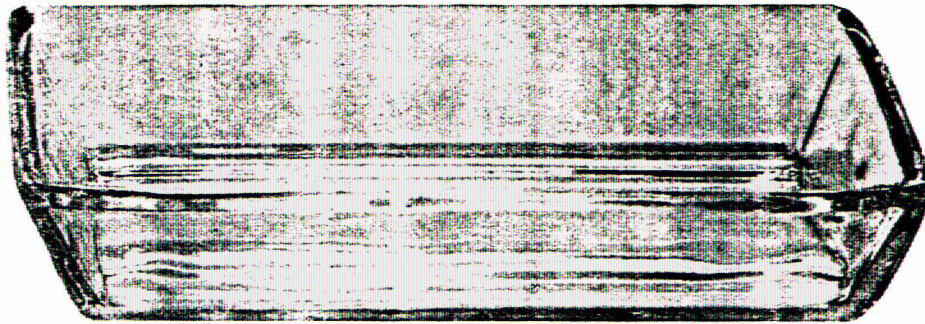
	No. 1	2	3	4
Capacity ounces .....	9	20	41	76
Outside diameter, inches .....	3	4	5	6
Outside diameter, MM .....	79	102	127	152
Height, inches .....	3	4	5	6
Height, MM .....	79	102	127	152
Price Each .....	\$ .70	1.05	1.75	2.10
Dozen to Barrel .....	17 1/2	7 1/2	4	2 1/2

(19x34) (19x34) (19x34) (19x34)

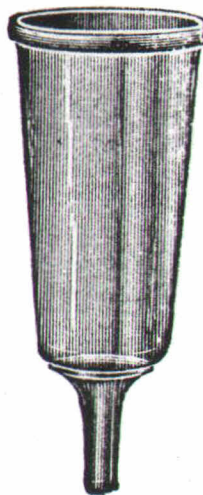
**767—TONGUE BLADE JAR WITH COVER**

Overall Height, inches .....	7 7/8
Overall Height, MM .....	200
Outside diameter, inches .....	3 3/8
Outside diameter, MM .....	79
Price Each .....	\$1.50
Dozen to Barrel .....	6

(19x34)



836



848

836—DEVELOPING TRAY—Fully Fire Polished. Smoothed edges.

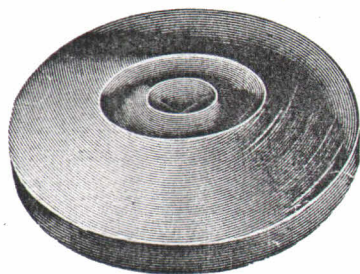
	No. 1	2	3
Bottom inside width, inches .....	4	5½	8¾
Bottom inside width, MM .....	102	140	215
Bottom inside length, inches .....	6	8¾	10½
Bottom inside length, MM .....	152	215	267
Price Each .....	\$ .50	1.50	3.00
Dozen to Barrel .....	7	3½	2¼

*Handwritten notes: \$17.88 doz, \$1.47 each*

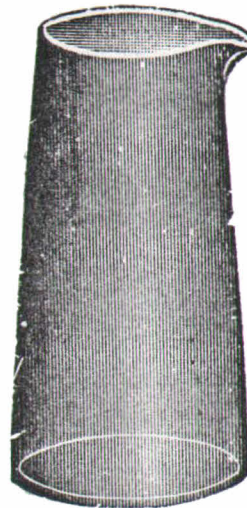
848—PERCOLATOR Cone Shape, Pressed, Bulb End.

	No. 1	2
Capacity, pints .....	4	8
Outside diameter at top, inches .....	5¾	7¼
Outside diameter at top, MM .....	146	182
Overall height inches .....	11½	13½
Overall height, MM .....	292	333
Price Each .....	\$1.75	3.30
Dozen to Barrel .....	1½	5/6

THE CAMBRIDGE GLASS COMPANY, CAMBRIDGE, OHIO



859



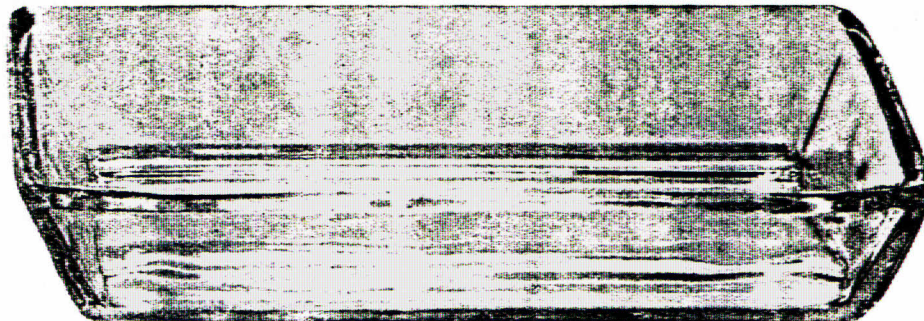
860

**859—SCALE FEET OR BALANCE RESTS**

Diameter, inches .....	1 7/8
Diameter, MM .....	47
Price Each .....	\$ .20
Dozen to Barrel .....	150
Dozen to Carton .....	12

**860—PRECIPITATING JAR**

	No. 1	2	3	4	5	6
Capacity, pints .....	1/4	1/2	1	2	4	8
Height, MM .....	110	136	153	202	234	313
Bottom Diameter, MM .....	49	65	84	102	134	156
Price Each .....	\$ .70	.80	1.25	1.50	2.25	2.75
Dozen to Barrel .....	32	19	9	4	2	1

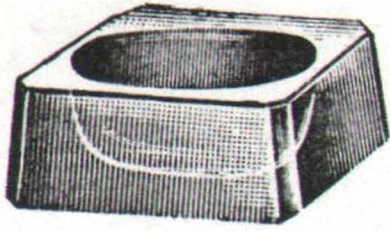


876

**876—TRAY—SURGICAL** for instruments. Fully fire polished—smooth edges.

	No. 1	2	3
Inside width, inches .....	4	5 1/2	8 3/4
Inside width, MM .....	102	140	215
Inside length, inches .....	6	8 3/4	10 1/2
Inside length, MM .....	152	215	267
Price Each .....	\$ .90	1.50	3.00
Dozen to Barrel .....	7	3 1/2	2 1/4

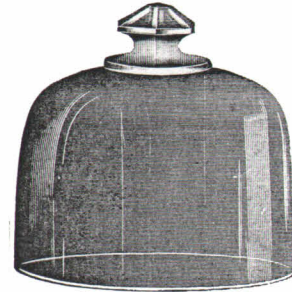
*THE CAMBRIDGE GLASS COMPANY, CAMBRIDGE, OHIO*



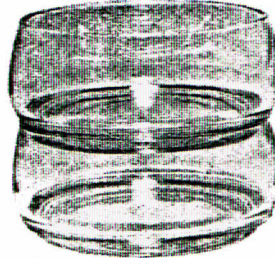
910



913



920



2590 1/2

**910—WATCH GLASS—Square—Size 1 1/8 inch Square**

**910-A—Plain**

41 mm	
Per dozen	<i>1.32</i> \$2.70
Doz. to barrel	150
Doz. to carton	12

**910-B—Ground front for marking**

41 mm	
Per dozen	<i>1.78</i> \$4.00
Doz. to barrel	150
Doz. to carton	12

**913—WATCH GLASS—SYRACUSE—Size 2 5/8 inch diameter. Groove in bottom for stacking.**

Overall diameter at bottom, inches	2 5/8
Overall diameter at bottom, MM	67
Inside diameter, inches	2 1/8
Inside diameter, MM	52

**913-A—Plain, grooved to stack**

Per dozen	<i>1.32</i> \$2.70
Dozen to Barrel	80
Dozen to Carton	12

**913-B—Ground top edge, grooved to stack not ground in.**

Per dozen	<i>2.11</i> \$4.80
Dozen to Barrel	80
Dozen to Carton	12

**913C—Ground top edge, ground-in groove to stack and be air tight.**

Per dozen	<i>2.38</i> \$5.40
Dozen to Barrel	80
Dozen to Carton	12

**920—WATCHMAKERS OR MOVEMENT COVER—To cover small objects**

	No. 1	2	3	4	5	6	7	8	9
Inside diam., in....	3	3 1/4	3 1/2	3 3/4	4	4 1/4	5	5 1/4	5 1/2
Inside diam., MM	76	82	89	95	101	121	127	133	140
Inside height, in....	1 1/2	1 3/4	2	2 1/8	2 1/4	2 1/2	2 3/4	2 3/4	2 3/4
Inside height, MM	38	44	51	54	54	63	63	63	63
Price Each	\$.50	.55	.60	.65	.70	.75	.80	.90	1.00
Dozen to Barrel	20	18	15	14	13	10	7	7	6

**2590 1/2—SPECIMEN DISHES**

Outside diameter, inches	4 1/2	8 1/4
Outside diameter, MM	114	210
Price Each	\$.70	2.00
Dozen to Barrel	10	2 1/2

*Handwritten notes:*  
 \$4.22 doz  
 \$4.47 doz  
 \$4.20 doz  
 \$11.88 doz

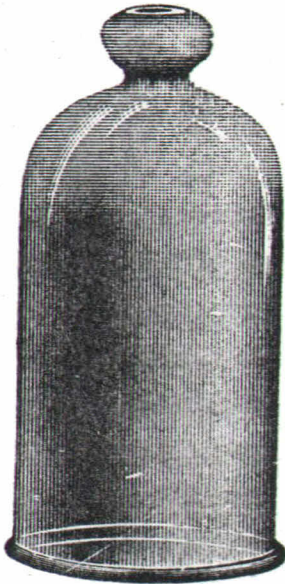


# BELL GLASSES

Packed one in a shipping carton.

Prices include package.

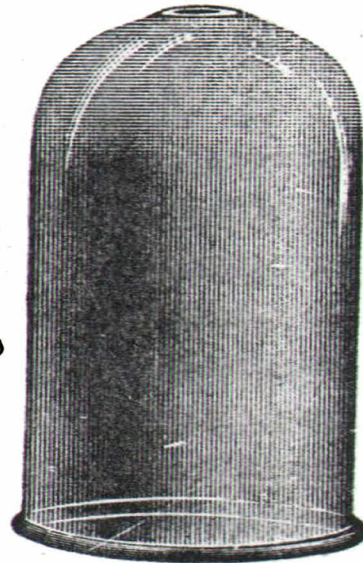
## 636½-A—CLOSED TOP, WITH KNOB



636½-A

Diam.	Height	Each
5 in. x 9 in.	<i>35.16 dia</i>	<del>\$8.00</del> <i>2.93</i>
6 in. x 11 in.	<del>54.50 dia</del> <i>54.50 dia</i>	<del>10.00</del> <i>4.50</i>
8½ in. x 15 in.		25.00

## 636½-B—1 inch Hole in Top for Rubber Stopper

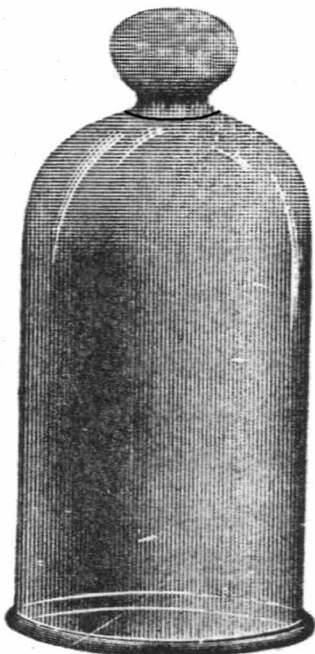


636½-B

Diam.	Height	Each
5 in. x 9 in.	<i>\$47.40 dia</i>	\$8.00
6 in. x 11 in.	<i>72.00</i>	<del>18.00</del> <i>6.00</i>
8½ in. x 15 in.		28.00

## 636½-C—GROUND IN GLASS STOPPER

(1 in. hole)



636½-C

Diam.	Height	Each
5 in. x 9 in.	<i>\$52.80 dia</i>	\$9.00
6 in. x 11 in.	<i>\$75.36</i>	<del>18.00</del>
8½ in. x 15 in.		32.00

THE CAMBRIDGE GLASS COMPANY, CAMBRIDGE, OHIO

# INDEX

	Page		Page
<b>A</b>			
Alcohol Cups .....	5	Jars—Bandage or Dressing .....	10
Alcohol Lamps .....	5	Battery .....	7
<b>B</b>			
Balance Rests .....	13	Coplin Staining .....	8
Balsam Bottles .....	6	Desiccating .....	9
Bandage or Dressing Jars .....	11	Precipitating .....	11
Battery Jars .....	7	Tongue Blade .....	12
Beaker, Pressed .....	7	<b>L</b>	
Beaker, Tumbler .....	7	Lamps—Alcohol .....	5
Bell Glasses .....	15	<b>M</b>	
Benzine Cups .....	6	Movement Covers, Watch .....	14
<b>C</b>			
Cone Shape Percolators .....	12	<b>P</b>	
Coplin Staining Jar .....	8	Percolators .....	12
Cover, Watchmaker or Movement... ..	14	Precipitating Jars .....	13
Cups—Alcohol .....	5	Pressed Beaker .....	7
Cups—Benzine .....	6	<b>R</b>	
<b>D</b>			
Desiccating Jars .....	9	Reagent Bottle Cap .....	7
Developing Tray .....	12	Ribbed Funnels .....	10
Dishes, Specimen .....	14	<b>S</b>	
Dish, Staining or Slide .....	8	Scale Feet .....	13
Dish, Stender .....	8	Specimen Dishes .....	14
<b>F</b>			
Fluted Funnels .....	10	Staining Jar, Coplin .....	8
Funnels—Diagonal Fluting .....	10	Stender Dish .....	8
Handy .....	10	Surgical Tray .....	13
Ribbed .....	10	Sugar Funnels .....	10
Sugar .....	10	<b>T</b>	
<b>H</b>			
Handy Funnels .....	10	Terms, Quotations, Packing, etc. ....	4
<b>J</b>			
<b>L</b>			
<b>M</b>			
<b>P</b>			
<b>R</b>			
<b>S</b>			
<b>T</b>			
<b>W</b>			
Watch Glasses .....	14	Tongue Blade Jar .....	11
Watch Movement Covers .....	14	Tray, Surgical .....	13
		Tumbler, Beaker .....	7